

FORD S-MAX



THE SIMPLE WAY TO DRIVE YOUR NEW FORD S-MAX

- 1 EXPLORE
- 2 SELECT
- 3 PERSONALISE
- 4 SPECIFICATIONS
- 5 PURCHASE



Unlock the interactive brochure
online

S-MAX ST-Line shown in Lucid Red metallic body colour (option) and 18" Machined Matt Black alloy wheels (standard).





1 EXPLORE

EMPOWER YOUR LIFE

New horizons. Familiar journeys. Surprising detours. Wherever life takes you, travel in comfort and arrive in style with Ford S-MAX. Stunning design blends with sophisticated technology and a dynamic driving experience to bring pleasure to every journey.

S-MAX ST-Line with 18" alloy wheels (standard), Moondust Silver metallic body colour (option) and ST-Line Lux Pack (option).



1 EXPLORE

S-MAX HYBRID

THE BEST OF BOTH WORLDS

Powered by Hybrid Electric Vehicle technology, the new S-MAX Hybrid combines electric and petrol power to provide effortless performance and a smooth, refined drive.

By switching seamlessly between its electric motors and petrol engine it eliminates charge range anxiety so you can enjoy the ride. And to make the whole system even more efficient, regenerative braking captures up to 90 per cent of the energy that would be normally lost during braking, and uses it to recharge the high-voltage battery.

Able to deliver pure electric and combined petrol-electric propulsion, S-MAX Hybrid features an electronically controlled power-split automatic transmission for a smooth, efficient and thrillingly responsive driving experience. While an innovative instrument cluster provides instant feedback on how your driving style is affecting efficiency.

- **Hybrid Electric Vehicle** technology combines the benefits of both electric and petrol power
- **Regenerative braking** captures energy usually lost during braking and uses it to recharge the high-voltage battery

S-MAX Vignale FHEV.



1 EXPLORE

NO COMPROMISE

You're not one for compromise. So when you need a car that can carry up to seven* people that is spacious and comfortable, yet is still a great-looking vehicle, there's only one choice to make. The Ford S-MAX has room for everything, except compromise. So get out there and enjoy life to the fullest.

*Seats up to seven people when an optional third row of seating is not folded.

S-MAX Vignale shown in Magnetic metallic body colour with premium perforated leather in Ebony seat trim.



1 EXPLORE

REFINEMENT REDEFINED

The Ford S-MAX Vignale radiates with refinement, combining the finest traditions of craftsmanship and a host of forward-thinking technologies. Exclusively sourced Ford Vignale leather offers a natural, glove-soft touch for an extra-sumptuous feel across the facia, door inserts, and elegantly quilted seats.

*Seats up to seven people when an optional third row of seating is fitted.

S-MAX Vignale with 19" 10-spoke alloy wheels (standard) and Blue Panther metallic body colour (no cost option).

PANORAMA ROOF

Enjoy the beauty of the outdoors from the comfort of your Ford S-MAX. A full-length glass panorama roof lets the sun shine in, while a solar reflect coating and powered sunblind provide shade and privacy when required. The feeling of comfort offered by the panorama roof is further extended by the addition of an infrared front windscreen and rear manual sunblinds (option).

S-MAX ST-Line shown with panorama roof (option) and Salerno leather in Ebony with red stitching seat trim (part of optional ST-Line Lux Pack).





| SYNC

1 EXPLORE

CONNECTED AND IN CONTROL

FORD SYNC 3

Available Ford SYNC 3 integrates seamlessly with your smartphone to make communication and navigation effortless*. You can control SYNC-compatible apps with AppLink, while Apple CarPlay and Android Auto let you use the 8" colour touchscreen as if it were your smartphone handset. Using the touchscreen or simple voice commands, you can make calls, write and listen to text messages, and control your music and satellite navigation.

FORDPASS CONNECT

The FordPass Connect modem that's built into your car enables a range of features designed to make driving easier and more enjoyable**. These include Live Traffic† that delivers up-to-date traffic information to your SYNC 3 Navigation system, and Local Hazard Information†† that can warn you of upcoming hazards before they are encountered. In the event of an accident, eCall‡ helps occupants place a call with the emergency services and shares your location. While for optimum connectivity, it also provides on-board Wi-Fi*** for a maximum of ten devices.

FORDPASS APP

Get the most from your connected car experience with the FordPass app®, from smart remote features to detailed vehicle health reports, the FordPass app lets you access even more functions via your smartphone. For peace of mind you can start†††, lock or unlock your vehicle wherever you are, and even defrost the windscreen and activate the heated seats and heated steering wheel (where fitted) on a cold winter's morning.

Health Alerts send important information, including tyre pressure and fluid level warnings such as oil life, direct to your phone.

Other FordPass app features include My Journeys, that can record your trips and deliver tailored insights on how to optimise your driving technique. Each journey is tracked and stored, allowing you to compare by distance, duration, and more.

FordPass also helps with security; you'll receive a notification if your car's alarm is activated, no matter where you are. The Guard mode feature takes security a step further and alerts you on your smartphone of any unauthorised access attempts – even with a stolen or duplicate key.

Please note: Full SYNC 3 smartphone integration is only available with iPhone 5/Android 5.0 (Lollipop) or higher. 100% connected. Only AppLink would incur charges. To check whether Apple CarPlay and Android Auto are available in your market, please refer to official Apple CarPlay and Android Auto websites for the latest information. Map updates are complimentary for a limited time following vehicle registration.

*Don't drive while distracted. Use voice-operated systems when possible; don't use handheld devices while driving. Some features may be locked out while the vehicle is in gear. Not all features are compatible with all phones.

**The on-board modem will be connected at the time of vehicle delivery. You may choose to opt in/out of certain data sharing. Where available, FordPass Connect remote features are complimentary for 10 years, thereafter a subscription may be payable.

***Wi-Fi hotspot (up to 4G LTE) includes a complimentary wireless data trial for a limited time only that begins at time of activation. Afterwards, data bundles can be purchased from Vodafone. Please refer to their website for details of their data packages. To take advantage of the built-in Wi-Fi hotspot capability, Ford vehicles must come with the appropriate hardware, and a data plan is required. Data coverage and service is not available everywhere and terms of your data plan, including applicable message and data rates, may apply.

†Live Traffic access is complimentary for the first 12 months following the registration of a new Ford featuring SYNC 3 with navigation; thereafter a licence subscription is required.

††Local Hazard information is complimentary for the first 12 months following the purchase of a new Ford with certain driver information modules; thereafter a licence subscription is required.

†††Remote start only available on models with automatic transmission.

‡Ford eCall shares vehicle location and helps the occupants initiate a call in their respective language to the local Communications Centre, following a vehicle crash event involving an airbag deployment or fuel pump shut off. The feature operates in more than 40 European countries and regions.

©FordPass app, compatible with select smartphone platforms, is available via a download. Message and data rates may apply.



Active Park Assist⁰²⁾

Can help you to parallel park or perpendicular park. Once activated, the enhanced system can help you to locate a suitable space as you drive past and will automatically guide you in, while you operate the pedals (following on-screen and audible signals). Park-Out Assist can help you manoeuvre out of a parallel parking space in a similar way (part of optional Driver Assistance Pack).

⁰¹⁾Uses sensors. ²⁾Driver Assistance feature. Driver-assist features are supplemental and do not replace the driver's attention, judgement and need to control the vehicle.



Adaptive Lighting with Dynamic LED headlights

Detects different road conditions and selects the appropriate beam pattern. Dynamic curve lights throw the beam inside the curve to let you see further and sooner. The headlights incorporate daytime running lights, with three LED strips that also function as turn indicators, flashing sequentially towards the direction of turn (part of optional Titanium and ST-Line Lux Packs, standard on Vignale).



Glare-free high beam

Lets you drive on high beam without dazzling other road users. Sensors identify traffic ahead of your car and adjust the high beam pattern to help protect other road users from glare, while illuminating the remainder of the road for greater visibility (part of optional Titanium and ST-Line Lux Packs, standard on Vignale).

Front wide-view camera²⁾

Front camera with split-view technology offers almost 180-degree view to the front and supports you when parking in and out of parking bays with restricted visibility. (Option on Titanium, ST-Line and Vignale)

²⁾Driver Assistance feature. Driver-assist features are supplemental and do not replace the driver's attention, judgement and need to control the vehicle. Cameras only operate at speeds under 6 mph (10 km/h).



Intelligent All-Wheel Drive

Continually monitors where power is needed, and can automatically apply the required torque to each wheel for added confidence, whatever the road conditions (only available with 2.0L EcoBlue 190 PS).

Adaptive Cruise Control with Stop & Go^{*2)}

Maintains a comfortable distance from the vehicle ahead, and can even bring your car to a complete stop and move off again as the traffic allows (part of optional Driver Assistance Pack).

*Stop & Go is only available with automatic transmissions

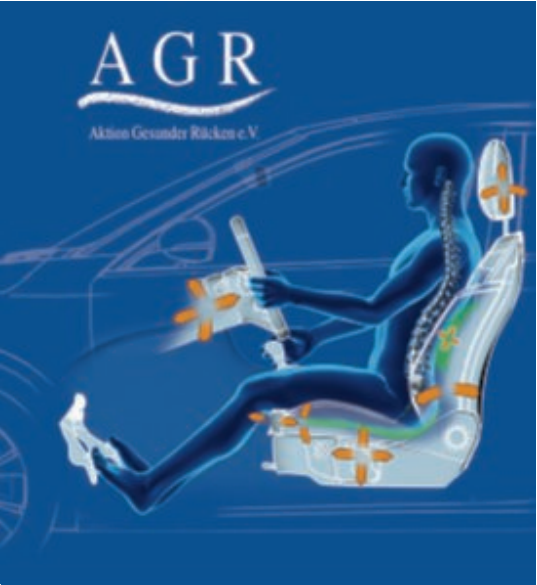




Pre-Collision Assist with pedestrian and cyclist detection⁰²⁾

Detects potential collisions with other vehicles, cyclists and pedestrians, and can help avoid or reduce the severity of accidents. If a potential collision is detected, the driver will receive visual and acoustic warnings, and the braking system will be prepared. If the driver does not react, the system can automatically apply full braking force. (Option)

⁰Uses sensors. ²⁾Driver Assistance feature. Driver-assist features are supplemental and do not replace the driver's attention, judgement and the need to control the vehicle. Pre-Collision Assist with Automatic Emergency Braking can detect pedestrians, but not in all conditions and does not replace safe driving. See owner's manual for system limitations.



Ergonomic seats with AGR certification*

help support your back. These ergonomically designed, 18-way manually-adjustable front seats with AGR accreditation are ideal for longer journeys (option).

*The AGR quality cachet (Aktion Gesunder Rücken = Campaign for Healthier Backs): Certified and recommended by Association Forum Healthy Back – Better Living and Federal Association of German Back Schools. More information: AGR e.V., Stader Str. 6, D – 27432 Bremervörde, Germany. Phone + 49 4761/92 63 580.

Blind Spot Information System with Cross Traffic Alert and Variable Rear Range⁰²⁾†

If another vehicle – a car, van or lorry – enters your blind spot, the system is designed to alert you with a warning light built into the corresponding door mirror. The blind spot detection zone will vary up to a range of 18 metres, depending on the speed of the vehicle (part of optional Driver Assistance Pack).

⁰Uses sensors. ²⁾Driver Assistance feature. Driver-assist features are supplemental and do not replace the driver's attention, judgement and need to control the vehicle. [†]Designed to operate at speeds above 6 mph (10 km/h).



Traffic Sign Recognition⁰

Is designed to automatically read standard format road-speed signs and display the posted speed limit in the instrument cluster

⁰Uses sensors.

Hands-free tailgate

Makes opening or closing S-MAX's tailgate easy, even when your hands are full. With the keys in your pocket or bag, simply use a gentle kicking motion under the centre of the rear bumper and the tailgate will operate without you having to touch a thing (part of optional Titanium and ST-Line Lux Packs).



Ford Clearview Front Wiper System

Improves visibility by delivering the washer fluid directly into the path of each wiper blade as it moves across the windscreen (standard).



2

SELECT

Available in a range of uniquely individual series, it's never been easier to choose a new Ford S-MAX. Whether you prefer the comfort of a Luxury vehicle, or the fun-loving dynamics of Sport, there is a new Ford S-MAX to suit you. To make your purchase choice even more rewarding, we've elevated the standard of features across all series. So now, whichever S-MAX route you decide to take, you can be sure of a higher level of standard features, as well as a host of add-on features available as part of an option pack.



Zetec (not available in the UK)

With its elegant design and impressive integrated technologies, a Ford S-MAX is the perfect choice to satisfy all your driving needs.

Key features

- 17" 10-spoke Sparkle Silver alloy wheels
- Electrically-operated, power-foldable and heated door mirrors with body colour housings, side indicators and puddle lights
- Ford Power starter button
- Quickclear heated windscreen
- Pre-Collision assist



Titanium

Ford S-MAX luxury models deliver superior levels of sophistication and comfort, with premium materials and additional technologies to make driving an even more pleasurable experience.

Key features

- 17" 5x2-spoke Sparkle Silver alloy wheels
- Front LED fog lights
- Roof rails (satin aluminium-finish)
- 10.1" colour TFT cluster display (diesel engines only)
- Ford DAB Navigation System



ST-Line

With the distinctive eye-catching individuality of ST-Line Edition, the S-MAX sports model delivers sporty driving dynamics, along with agility and control.

Key features

- 18" 10-spoke machined/painted matt black alloy wheels
- Bodystyling kit (includes unique front and rear bumpers, fog lights, upper and lower grille and rocker panel mouldings)
- Sports suspension
- Front door bright-finish scuff plates with ST-Line logo
- Black roof rails



Vignale

For the ultimate S-MAX ownership experience, Vignale combines elegance and exclusive craftsmanship with the very latest technologies.

Key features

- 19" 10-spoke polished aluminum finish alloy wheels
- Unique Ford Vignale exterior styling with chrome detailing
- Adaptive Lighting with Dynamic LED headlights and glare-free high beam
- Leather-trimmed instrument panel
- Ford SYNC 3 Premium Sony DAB Navigation System with 12 speakers

Titanium

Exterior features

- 17" 5x2-spoke alloy wheels
- Front LED fog lights
- LED daytime running lights
- Automatic headlights with auto high beam
- Rear privacy glass
- Chrome window surround
- Silver roof rails

Interior features

- Ford DAB Navigation System
- Lane-Keeping Aid with Lane Departure Warning
- Traffic Sign Recognition
- Front seat back table trays
- 230 V Power outlet
- Ford KeyFree System with Ford Power starter button
- Interior ambient lighting
- 10.1" semi-digital colour cluster

Engines

Diesel:
2.0L Ford EcoBlue 150 PS (110 kW)
2.5L Duratec FHEV 190 PS (140 KW)

Transmissions:

6 speed manual
8 speed automatic
CVT Automatic



ST-Line

Key exterior features additional to Titanium

- 18" 10-spoke alloy wheels
- Halogen headlights and LED rear lights with black surrounds
- Power-foldable door mirrors with driver's dimming, memory function and auto dip with reverse gear selected
- Bodystyling kit (includes unique front and rear bumpers, fog lights, upper and lower grille and rocker panel mouldings)
- Rear spoiler
- Red brake calipers
- Sports suspension
- Black roof rails

Key interior features additional to Titanium

- Perforated leather-trimmed steering wheel with red stitching
- Heated steering wheel
- Leather-trimmed gearshift gaiter with red stitching
- Salerno part-leather sport seats with red stitching
- 8-way power and variable heated front seats
- Memory driver's seat
- Aluminium sports pedals
- Front door scuff plates with ST-Line logo
- ST-Line floor mats with red stitching
- Dark themed interior

Engines

Diesel
2.0L Ford EcoBlue 190 PS (140 kW)
2.5L Duratec FHEV 190 PS (140 KW)

Transmissions

8 speed automatic
8 speed automatic All-Wheel Drive (AWD)
CVT Automatic



2 SELECT Vignale

Key exterior features additional to ST-Line

- 19" 10-spoke alloy wheels
- Fog lights with high gloss black bezel and chrome surround
- Adaptive Lighting with Ford Dynamic LED headlights and glare-free high beam
- Unique Ford Vignale exterior styling with chrome detailing
- Metallic paint
- Enhanced power-foldable door mirrors with driver's dimming, memory function and auto dip with reverse gear selected
- Rear-view camera
- Bright-finish dual exhaust
- Power tailgate

Key interior features additional to ST-Line

- Ford SYNC 3 Premium Sony DAB Navigation System with 12 speakers
- Premium perforated leather trim
- Climate controlled front seats
- 10-way power multi-contour front seats with massage
- Leather-trimmed instrument panel
- Active Noise Control
- Luxury serged edging carpet floor mats, front and rear
- Front door bright-finish scuff plates with Vignale script
- Enhanced ambient lighting

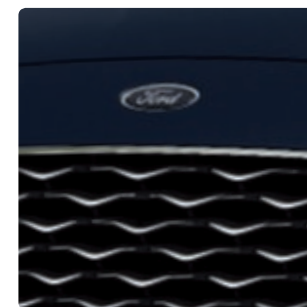
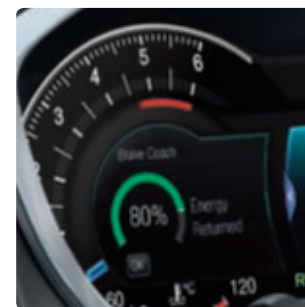
Engines

Diesel

2.0L Ford EcoBlue 190 PS (140 kW)
2.5L Duratec FHEV 190 PS (140 kW)

Transmissions

8 speed automatic
8 speed automatic All-Wheel Drive (AWD)
CVT Automatic



3

PERSONALISE

Choose your colour, wheels, options and extras, and make S-MAX unmistakably yours.



Lucid Red^{††}
*Exclusive body colour**

LIFE IN GLORIOUS COLOUR

Ford S-MAX owes its beautiful and durable exterior to a special multi-stage painting process. From the wax-injected steel body sections to the protective top coat, new materials and application processes ensure your new S-MAX will retain its good looks for many years to come.



Blazer Blue
Solid body colour



Blue Panther
*Metallic body colour**



Magnetic
*Metallic body colour**



Frozen White
Solid body colour



Chrome Blue
*Metallic body colour**



Moondust Silver
*Metallic body colour**



Agate Black^{††}
*Metallic body colour**

BODY COLOURS

*Metallic and exclusive body colours are options at extra cost.

^{††}Available from early 2020.

[°]Available on Vignale only.

^{°°}Available on ST-Line only.

The Ford S-MAX is covered by the Ford Perforation Warranty for 12 years from the date of first registration. Subject to terms and conditions.

Note The car images used are to illustrate body colours only and may not reflect current specification or product availability in certain markets. Colours and trims reproduced within this brochure may vary from the actual colours, due to limitations of the printing processes used.

3 PERSONALISE TRIMS

WHEELS



Axis with Omni in Ebony
Standard on Titanium



Calder with Omni in Ebony
Optional on Trend and Titanium with
Ergonomic seats



Salerno leather in Ebony
Option on Titanium



**Salerno leather with Miko Suede in
Ebony with red stitching**
Standard on ST-Line



**Salerno leather in Ebony with red
stitching**
Option on ST-Line



**Hex micro perforated Salerno leather
with Windsor Salerno leather in Ebony**
Standard on Vignale



17"

5x2-spoke Sparkle Silver alloy wheel
Standard on Titanium (Fitted with 235/55
R17 tyres)



18"

**5x2-spoke Machined Matte
Black alloy wheel**
Standard on ST-Line
(Fitted with 235/50 ZR18 tyres)



19"

**5x2-spoke Luster Nickel finish
alloy wheel**
Option on Titanium
(Fitted with 245/45 R19 tyres)



19"

**5x2-spoke Rock Metallic finish
alloy wheel**
Option on ST-Line
(Fitted with 245/45 R19 tyres)

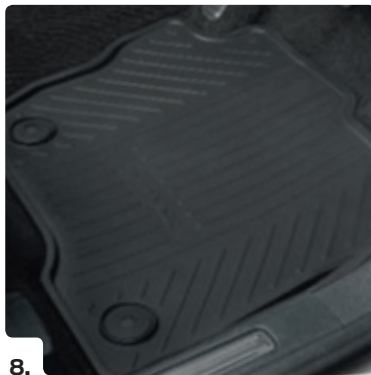
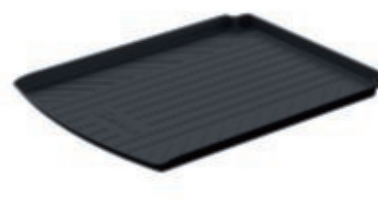
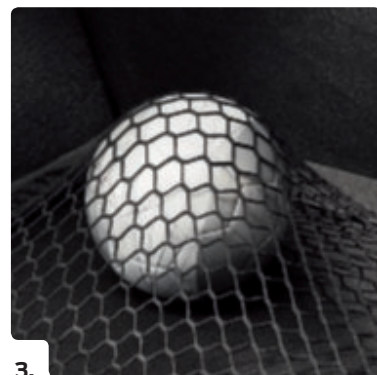
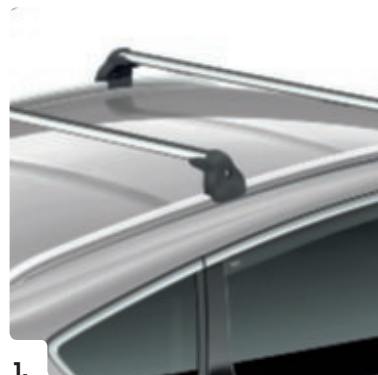


19"

**10-spoke polished aluminium finish
alloy wheel**
Standard on Vignale
(Fitted with 245/45 R19 tyres)

Note All alloy wheels are available as accessories through
your Ford Dealer at extra cost. Visit ford-accessories.com

3 PERSONALISE ACCESSORIES



1. **Roof base carrier**
2. **Retractable tow bar**
3. **Load floor net**
4. **Boot liner**
5. **4pets dog crate**
6. **ClimAir wind deflectors**
7. **Protection shield**
8. **Rubber floor mats**
9. **Mud flaps**
10. **Cross bars**
11. **G3+ roof box**
12. **Detachable tow bar**

Items ordered as an option, will be fitted in the factory. If ordered as an accessory, items will be fitted at the dealership. Fitment of accessories may have an impact on your vehicle's fuel consumption.

✦Item covered by third party supplier's warranty, please see back cover for details.

For more S-MAX accessories visit
www.ford-accessories.co.uk

For a range of Ford branded merchandise – from clothing to lifestyle and travel products – visit
www.fordlifestylecollection.com



4

SPECIFICATIONS

Get to know your new Ford S-MAX inside and out, from its intelligent engine technology to its generous equipment level.

1 12 V service battery

The 12-volt battery keeps all the electrical systems running while your car is parked, including security systems, clock and computer memory.

2 High-voltage battery

S-MAX Hybrid's 1.1 kWh lithium-ion battery is mounted under the floor to avoid intruding on the interior space.

3 eCVT transmission

Advanced water cooled power-split automatic transmission seamlessly adjusts the gear ratios for smooth, refined performance and greater fuel efficiency.

4 High-voltage battery cooling lines

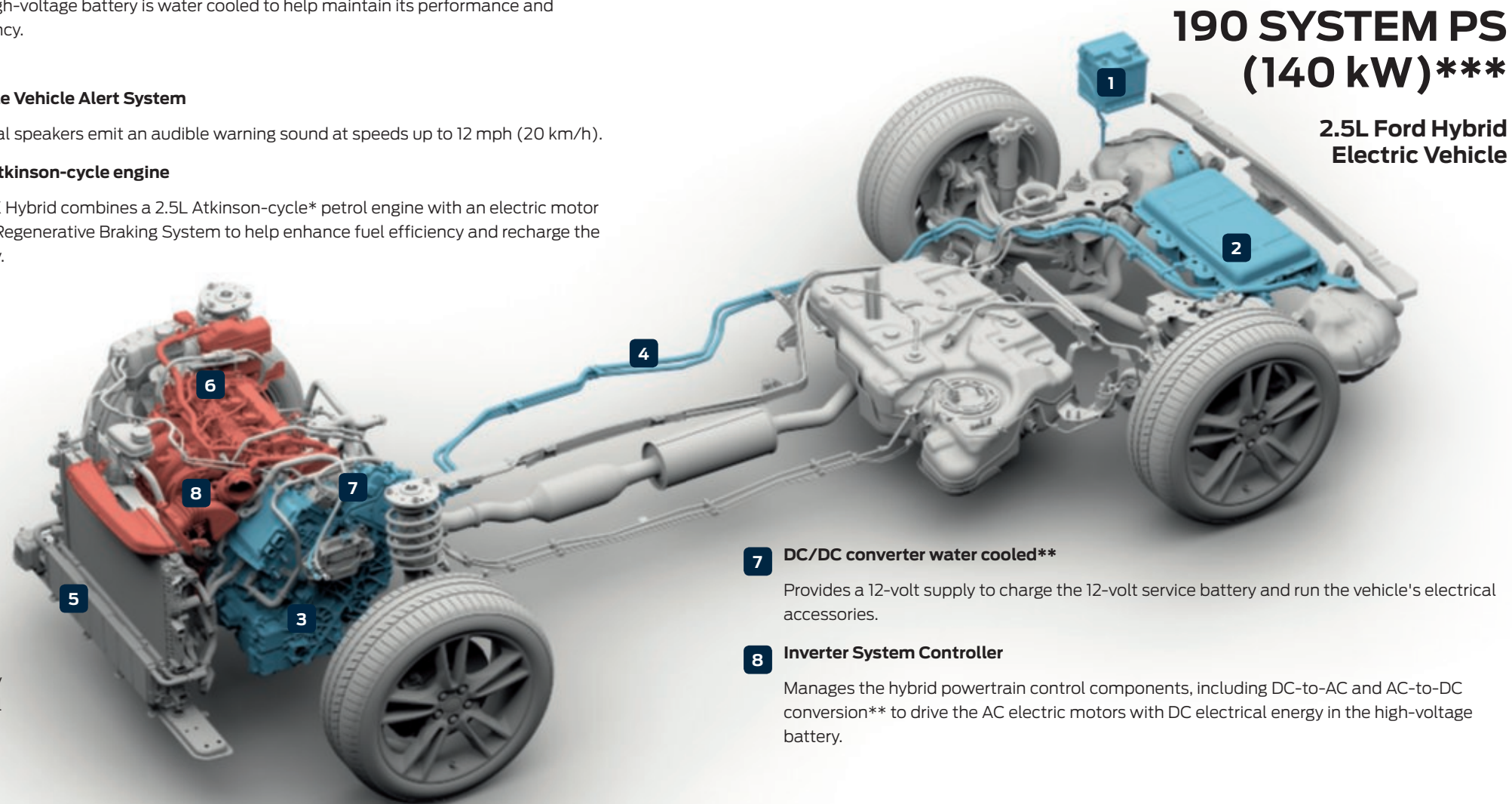
The high-voltage battery is water cooled to help maintain its performance and efficiency.

5 Audible Vehicle Alert System

External speakers emit an audible warning sound at speeds up to 12 mph (20 km/h).

6 2.5L Atkinson-cycle engine

S-MAX Hybrid combines a 2.5L Atkinson-cycle* petrol engine with an electric motor and a Regenerative Braking System to help enhance fuel efficiency and recharge the battery.

**190 SYSTEM PS
(140 kW)*******2.5L Ford Hybrid
Electric Vehicle****Warm your vehicle before you go**

FordPass app† allows you to warm your vehicle remotely, so on colder days you can be sure that your cabin environment is welcoming and comfortable from the moment you step inside. (Available with automatic transmission only)



*An Atkinson-cycle engine does not develop as much power as an Otto cycle engine, but offers greater fuel efficiency. It is specifically designed to work in conjunction with an electric motor.

**AC and DC describe types of current flow in a circuit. In AC (alternating current), the electric current constantly changes direction. In DC (direct current), the current flows in one direction only.

***Due to the complexity of the power-split hybrid powertrain technology (petrol + electric motor) and the nature of the measurement methodology, the performance level (System Power) has always got some tolerances and may vary.

†FordPass app, compatible with select smartphone platforms, is available via a download. Message and data rates may apply.

4 SPECIFICATIONS DIMENSIONS

Exterior (mm)	
Overall length without tow bar	4804
Overall width with/without mirrors	2137/1916
Overall width with folded mirrors	1953
Overall height (unladen)	1684
Minimum distance between wheel arches (in luggage load compartment)	1145
Luggage capacity (litres)*	
7-seat mode (laden to roof)	285
5-seat mode (laden to roof)	965
2-seat mode (laden to roof)	2020



To view the full features and specifications of this vehicle, download the digital brochure or view the interactive brochure at <https://www.ford.co.uk/shop/research/brochure-download> or scan the QR code.

*Measured in accordance with ISO 3832. Dimensions may vary dependent on the model and equipment fitted.

FUEL

	2.0L Ford EcoBlue diesel (with Auto Start-Stop)	2.0L Ford EcoBlue diesel (with Auto Start-Stop)	2.0L Ford EcoBlue diesel (with Auto Start-Stop)	2.0L Ford EcoBlue diesel (with Auto Start-Stop)	2.5 Duratec190PS FHEV (with Auto Start-Stop)
Available on	Titanium	Titanium	ST-Line, Vignale	ST-Line, Vignale	Titanium, ST-Line, Vignale
5-door					
Emission standard	Euro 6d	Euro 6d	Euro 6d	Euro 6d	Euro 6d
Fuel type	Diesel	Diesel	Diesel	Diesel	Petrol
Maximum Power PS (kW)	150 (110)	150 (110)	190 (140)	190 (140)	190 (140)
Torque Nm	350	350	400	400	200
CO ₂ emissions ^{oo} (WLTP figures without options)					
CO ₂ emissions with standard wheel	159	169	170	176	148
Transmission	6-speed manual	8-speed automatic	8-speed automatic	8-speed automatic	CVT Automatic
Drive	4x2	4x2	4x2	4x4	4x2
Combined Fuel Consumption ^{oo} (WLTP figures without options)					
Lowest Performing MPG (L/100km) combined	46.3 (6.1)	44.1 (6.4)	43.5 (6.5)	42.2 (6.7)	43.5 (6.5)
Highest Performing MPG (L/100km) combined	46.3 (6.1)	44.1 (6.4)	44.1 (6.5)	42.2 (6.7)	44.1 (6.4)
Performance ^o					
Max. speed (mph)	123	122	129	128	115
0-62 mph (secs)	10.8	10.8	9.5	10.5	9.8
31-62 mph* (secs)	10.8	n/a	n/a	n/a	5.9
Weights and loads					
Kerbweight (kg)*	1901	1905	1902	1984	1947
Gross vehicle mass (kg)	2555	2555	2555	2635	2545
Gross train mass (kg)	4355	4555	4355	4635	4105
Max. Towable Mass (braked) (12%*) (kg)	1800	2000	2000	2000	1560
Max. Towable Mass (braked) (8%*) (kg)	2000	2000	2000	2000	n/a
Max. Towable Mass (unbraked) (kg)	750	750	750	750	750

^{*}In 4th gear. ^oFord test figures. ^{oo}The declared Fuel/Energy Consumptions, CO₂ emissions and electric range are measured according to the technical requirements and specifications of the European Regulations (EC) 715/2007 and (EC) 692/2008 as last amended. Fuel consumption and CO₂ emissions are specified for a vehicle variant and not for a single car. The applied standard test procedure enables comparison between different vehicle types and different manufacturers. In addition to the fuel efficiency of a car, driving behaviour as well as other non-technical factors play a role in determining a car's fuel/energy consumption, CO₂ emissions and electric range. CO₂ is the main greenhouse gas responsible for global warming. A guide on fuel economy and CO₂ emissions which contains data for all new passenger car models is available at any point of sale free of charge or can be downloaded under <https://carfueldata.vehicle-certification-agency.gov.uk/>
^{*}Represents the lightest kerbweight assuming driver at 75 kg, full fluid levels and 90% fuel levels, subject to manufacturing tolerances and options, etc., fitted. Towing limits quoted represent the maximum towing ability of the vehicle at its Gross Vehicle Mass to restart on a 12 per cent gradient at sea level. The performance and economy of all models will be reduced when used for towing. Gross Train Mass includes trailer weight.
^{*}Gradient at sea level.

Colour and trim

	Standard body colours	Premium body colours*					Exclusive body colours*	
	Blazer Blue	Frozen White	Agate Black	Blue Panther	Chrome Blue	Moondust Silver	Lucid Red	Magnetic
Titanium								
Axis in Ebony Cloth								
Calder in Ebony Cloth(with optional Ergo Seat)								
Salerno Leather in Ebony (part of optional Titanium Lux Pack)								
ST-Line								
Salerno Part-Leather in Ebony with Red Stitching								
Salerno Full Leather in Ebony (part of optional ST-Line Lux Pack)								
Vignale								
Windsor Full Perforated Leather in Ebony with Multi Contour Front Seats								

*Metallic and mica body colours, full leather and suede/leather trim are optional, at extra cost.

Styling and appearance

	Titanium	ST-Line	Vignale
Wheels			
Alloy – 17", 5x2-spoke, Sparkle Silver finish			
Alloy – 18", 10-spoke, machined/painted Matt Black finish			
Alloy – 19", 5x2-spoke, Luster Nickel finish			
Alloy – 19", 5x2-spoke, Rock Metallic finish			
Alloy – 19", 10-spoke, Polished Aluminium finish			
Locking wheel nuts			

*The wheel you choose will be fitted with the tyre size noted, but no choice of tyre brand is available.

- Available
- Option at extra cost
- Part of an option pack at extra cost

- Standard
- Option at extra cost
- Part of an option pack at extra cost

Styling and appearance

	Titanium	ST-Line	Vignale
Design features			
Black finish on upper doorline			
Chrome finish day light opening (DLO) surround			
Door handles – Body colour			
Door handles – Body colour with bright insert			
Exhaust – Dual (available with 150 PS engines)			
Exhaust – Dual, chrome finish trim (available with 190 PS engines)			
Rear Bumper – Painted body colour upper/painted body colour lower			
Front and rear bumper – Painted body colour upper/painted body colour lower			
Front Bumper – Painted body colour upper and lower – Sport Design lower; rear bumper – lower body colour			
Front and rear bumper – Body colour lower and upper with chrome accents and High Gloss Black rear diffuser			
Front fog lights – LED			
Fog light bezel – Carbon Black (high gloss) bezel with Bright Chrome surround			
Fog light bezel – Ebony bezel with body colour surround			
Fog light bezel – Carbon Black (high gloss) bezel (Vignale style) with Satin Chrome surround			
Front lower grille – High Gloss and Matt Carbon Black Bars			
Front lower grille – High Gloss and Matt Carbon Black			
Front upper grille – High Gloss and Matt Carbon Black chrome finish horizontal bars and surround			
Front upper grille – Honeycomb with High Gloss and Matt Carbon Black			
Front upper grille – Satin Chrome Flying V Mesh – Matt Carbon Black			

Styling and appearance

	Titanium	ST-Line	Vignale
Rocker panel mouldings – bodycolour painted			
Rear spoiler – Body colour			
Rear privacy glass			
Roof rails – Silver finish (not available with panorama roof)			
Roof rails – Carbon Black finish (not available with panorama roof)			
Power tailgate (as part of optional Titanium/ST-Line Lux Packs)			
Scuff plates – Silver finish front door			
Scuff plates – Bright finish front door with ST-Line			
Pedal set with aluminium covers			
Paint			
Door mirrors – Body colour skull cap			

- Standard
- Option at extra cost
- Part of an option pack at extra cost

Driving experience

	Titanium	ST-Line	Vignale
Driver assistance			
Active Park Assist (enhanced) – including Perpendicular park assist and Park-Out Assist (part of optional Driver Assistance Pack)	Part of an option pack at extra cost	Part of an option pack at extra cost	Part of an option pack at extra cost
Rear-view camera (part of optional Driver Assistance Pack)	Part of an option pack at extra cost	Part of an option pack at extra cost	Standard
Front video camera with split-view (part of optional Driver Assistance Pack)	Part of an option pack at extra cost	Part of an option pack at extra cost	Part of an option pack at extra cost
Parking distance sensors – Front and rear	Standard	Standard	Standard
Cruise control – includes Speed Limiter and Intelligent speed assistance	Standard	Standard	Standard
Adaptive Cruise Control (with Stop & Go for automatic transmission only) (part of optional Driver Assistance Pack)	Part of an option pack at extra cost	Part of an option pack at extra cost	Part of an option pack at extra cost
Pre-Collision Assist with pedestrian and cyclist detection ¹⁾	Standard	Standard	Standard
Blind Spot Information System with Cross Traffic Alert ²⁾ (part of optional Driver Assistance Pack)	Part of an option pack at extra cost	Part of an option pack at extra cost	Part of an option pack at extra cost
Lane-Keeping System ²⁾ (including Lane-Keeping Aid ²⁾ , Lane-Keeping Alert ²⁾)	Standard	Standard	Standard
Traffic Sign Recognition ²⁾	Standard	Standard	Standard
Electric power-assisted steering (EPAS)	Standard	Standard	Standard
Exterior lighting			
Front fog lights	Standard	Standard	Standard
Headlights – Courtesy delay	Standard	Standard	Standard
Headlights – Halogen projector	Standard	Standard	
Headlights – Adaptive LED headlights (with Glare-Free high beam and dynamic levelling) (as part of optional Titanium/ST-Line Lux Packs)	Part of an option pack at extra cost	Part of an option pack at extra cost	Standard
Headlights – LED daytime running lights	Standard	Standard	Standard
Headlights – Manual levelling control	Standard	Standard	
Headlights – Dynamic auto levelling (included with Adaptive LED headlights) (part of Titanium/ST-Line Lux Packs)	Part of an option pack at extra cost	Part of an option pack at extra cost	Standard
Rear lights with LED technology	Standard	Standard	Standard
Suspension			
Sport		Standard	
Self-levelling (not available with AWD)	Option at extra cost		Option at extra cost

¹⁾Safety feature, ²⁾Driver assistance feature.

Performance and efficiency

	Titanium	ST-Line	Vignale
Technology			
Auto Start-Stop system	Standard	Standard	Standard

Comfort and convenience

	Titanium	ST-Line	Vignale
Interior convenience			
Centre console – with fixed armrest and stowage	Standard	Standard	
Centre console – with fixed leather armrest and stowage			Standard
Centre console – with uncovered moulded cup holders	Standard	Standard	Standard
Overhead console – full length with sunglasses stowage and child observation mirror	Standard	Standard	Standard
Sunblinds – Rear doors, manual (with optional Panorama Roof)	Part of an option pack at extra cost	Part of an option pack at extra cost	Part of an option pack at extra cost

Standard

Option at extra cost

Part of an option pack at extra cost

Comfort and convenience

	Titanium	ST-Line	Vignale
Audio and communication systems			
Ford SYNC 3 DAB Radio/CD/navigation system, single CD, AM/FM dual tuner radio, 8" TFT LCD touchscreen, 8 speakers, Voice Control, touchscreen, media hub with 2 USB slots, FordPass Connect* (embedded modem)	Standard	Standard	
Premium Ford SYNC 3 SONY DAB Radio/CD/navigation system, single CD, AM/FM dual tuner radio, 8" TFT LCD touchscreen, 12 speakers, Voice Control, touchscreen, media hub with 2 USB slots, FordPass Connect* (embedded modem)	Option at extra cost	Option at extra cost	Part of an option pack at extra cost
Climate control			
Air conditioning – Dual-zone Electronic Automatic Temperature Control (DEATC)	Standard	Standard	Standard
Rear air conditioning – Tri-zone Electronic Automatic Temperature Control	Option at extra cost	Option at extra cost	Option at extra cost
Interior lighting			
Courtesy lights – LED third row reading lights (included with third row seats)	Standard	Standard	Standard
Courtesy lights – Ambient lighting (front door release handles, console main stowage bin, media hub, console pass through and front and rear footwells)	Standard	Standard	
Courtesy lights – Ambient lighting (front and rear door release handles, front and rear door map pockets, console cupholders, console main stowage bin, media hub, console pass through and front and rear footwells)			Standard

*Ford Emergency Assistance is an innovative SYNC feature that uses a Bluetooth®-paired and connected mobile phone to help vehicle occupants initiate a direct call to the local Communications Centre, following a vehicle crash event involving an airbag deployment or fuel pump shut off. The feature operates in more than 40 European countries and regions.**FordPass Connect features and Live Traffic are complimentary for a limited time period following registration of the vehicle, thereafter a subscription is payable. Wi-Fi hotspot includes complimentary wireless data trial that begins at time of activation and expires at the end of the initial trial period or trial data is used, whichever comes first. Afterwards a subscription to Vodafone is required (please refer to their website for details of data packages).

Comfort and convenience

	Titanium	ST-Line	Vignale
Seating			
Front seats – Sports style	Standard	Standard	
Front seats – Sports plus style			Standard
Front seat – 4-way manual driver's seat (fore/aft/up/down) with driver's manual lumbar support adjustment	Standard		
Front seat – 18-way ERGO driver's seat (8-way manual seat adjust, lumbar seat 4-way power, front 4-way head restraint, seat recliner-lever and cushion extension)	Option at extra cost		
Front seat – 10-way power driver's seat (power fore/aft/up/down/recline/tilt/2-way power lumbar) (part of optional Titanium Lux Pack)	Part of an option pack at extra cost	Standard	
Front seat – 10-way power driver's multi-contour seat (only available with perforated leather seats) (power fore/aft/up/down/recline/tilt)			Standard
Front seats – 4-way manual passenger seat (fore/aft/up/down/recline)	Standard		
Front seats – 10-way power passenger seat (fore/aft/up/down/recline/tilt/2-way power lumbar)	Part of an option pack at extra cost	Standard	
Front seats – 10-way power passenger multi-contour seat (only available with perforated leather seats) (power fore/aft/up/down/recline/tilt)			Standard
Front seats – 4-way manual height adjust passive head restraints	Standard	Standard	Standard
Front seats – Variable heated driver and passenger seat (part of optional Winter Pack)	Part of an option pack at extra cost	Standard	Standard
Front seats – Climate driver and passenger seat (heated and cooled) (only available with perforated leather seats)			Standard
Front seats – Seat back tray tables (not available with optional Ergo Seats)	Standard	Standard	Standard
Seats – Perforated leather/suede-trimmed with red stitching (includes 10-way power driver's seat adjustment with memory, 10-way power passenger's seat adjustment, heated front seats, and exterior mirrors with memory)		Standard	
Seats – Leather-trimmed (includes 10-way power driver's seat adjustment with memory, 10-way power passenger's seat adjustment, heated front seats, and exterior mirrors with memory) with red stitching for ST-Line	Option at extra cost	Option at extra cost	
Seats – Premium perforated luxury leather-trimmed			Standard
Seats – Multi-contour seatbacks (includes 10-way power driver's seat adjustment with memory, 10-way power passenger's seat adjustment, climate-controlled front seats, and exterior mirrors with memory)			Standard
Rear seats – Second row seats with manual easy entry, fold-flat, slide and recline	Standard	Standard	Standard
Rear seats – Third row seats with easy fold-flat and manual easy entry to the third row	Standard	Standard	Standard

Standard

Option at extra cost

Part of an option pack at extra cost

Comfort and convenience

	Titanium	ST-Line	Vignale
Instruments and controls			
Door mirrors – Power-operated, heated and power-foldable with body colour housings, side indicators and puddle lights	Standard		
Door mirrors – Power-operated, heated and power-foldable with body colour housings, side indicators, puddle lights and memory	Option at extra cost	Standard	Standard
Door mirrors – Body colour skull cap	Standard	Standard	Standard
Panorama roof – Fixed (includes electric sunblind) (not available with roof rack side rails)	Option at extra cost	Option at extra cost	Option at extra cost
Headlights – Jet wash			Standard
Wipers – Automatic windscreen wash wipe with variable sensitivity adjustment (included with auto-dimming rear-view mirror)	Standard	Standard	Standard
Wipers – Ford Clearview front wiper system	Standard	Standard	Standard
Gearshift knob – Leather-trimmed (manual transmission only)	Standard		Standard
Gearshift knob – Leather-trimmed with red stitching (manual transmission only)		Standard	
Rotary gearshift knob (automatic transmission only)	Standard	Standard	Standard
Steering wheel – Leather-trimmed	Standard		Standard
Steering wheel – Perforated leather-trimmed steering wheel with red stitching		Standard	
Steering wheel – Heated (part of optional Winter Pack)	Option at extra cost	Standard	Standard
Instrument cluster Level 3 – 10.1" colour TFT display	Standard	Standard	Standard
Ford KeyFree System with Ford Power starter button	Standard	Standard	Standard
Power tailgate (as part of optional Titanium/ST-Line Lux Pack)	Option at extra cost	Option at extra cost	Standard
Windows – Power front and rear with one-shot up and down	Standard	Standard	Standard
Windows – Global lowering/closing	Standard	Standard	Standard
Steering column – Rake- and reach-adjustable	Standard	Standard	Standard

Comfort and convenience

	Titanium	ST-Line	Vignale
Technology			
Quickclear heated windscreen, with heated windscreen washer jets	Standard	Standard	Standard
Mirror – Auto-dimming rear-view	Standard	Standard	Standard
Option Packs			
Driver Assistance Pack – Premium Ford SYNC 3 SONY DAB, Active Park Assist with Parallel and Perpendicular parking, Park-Out Assist (parallel only), Adaptive Cruise Control, Front and rear-view camera Blind Spot Information System (BLIS)	Option at extra cost	Option at extra cost	Option at extra cost
Driver Assistance Pack – Premium Ford SYNC 3 SONY DAB, Active Park Assist with Parallel and Perpendicular parking, Park-Out Assist (parallel only), Front and rear-view camera Blind Spot Information System (BLIS)	Option at extra cost	Option at extra cost	Option at extra cost
Winter Pack – Heated windscreen and heated steering wheel	Option at extra cost	Standard	Standard
Titanium Lux Pack – Adaptive LED Headlamps, Leather Seats, Variable Heated Front Seats, 8-way Power Front Seats and Power Liftgate	Option at extra cost		
ST-Line Lux Pack – Adaptive LED Headlamps, Leather Seats with Red Stitching, Variable Heated Front Seats and Power Liftgate		Option at extra cost	

- Standard
- Option at extra cost
- Part of an option pack at extra cost

Safety and security

	Titanium	ST-Line	Vignale
Safety			
Electric parking brake (EPB)	Standard	Standard	Standard
Ford Intelligent Protection System (IPS) ¹⁾	Standard	Standard	Standard
Anti-lock braking system (ABS) with electronic brake-force distribution (EBD) ¹⁾	Standard	Standard	Standard
Curve Control ¹⁾	Standard	Standard	Standard
Electronic Stability Control (ESC) – Includes Trailer Sway Control ¹⁾ and Hill Start Assist ²⁾	Standard	Standard	Standard
Active Rollover Protection ¹⁾	Standard	Standard	Standard
Airbags – Driver's and front passenger's ^{•1)}	Standard	Standard	Standard
Airbags – Front side impact ¹⁾	Standard	Standard	Standard
Airbags – Driver's knee bolster ¹⁾	Standard	Standard	Standard
Airbags – Driver and passenger first, second and third row side curtain ¹⁾	Standard	Standard	Standard
Airbags – Rear side impact (2nd row outboard) ¹⁾	Standard	Standard	Standard
Airbags – Passenger airbag deactivation switch ¹⁾	Standard	Standard	Standard
Seats – ISOFIX mounting provision for rear child seats (outer seats only) ¹⁾	Standard	Standard	Standard
Security			
Childproof locks on rear doors	Standard	Standard	Standard
Remote, power central single locking	Standard	Standard	Standard
Thatcham Category I alarm with volume sensing, perimeter alarm battery backed (includes remote central/double locking)	Standard	Standard	Standard
Brakes			
Brake calipers (red)		Standard	

Utility

	Titanium	ST-Line	Vignale
Body			
Windows – Fixed rear quarter glass	Standard	Standard	Standard
Carpet and trim			
Floor mats – Carpet, front and rear deluxe (with red-stitching on ST-Line)	Standard	Standard	
Floor mats – Luxury with serged edging			Standard
Electrical			
Centre console – 230V power outlet	Standard	Standard	Standard
Exterior functional			
Rear bumper anti-scratch pad – Self colour	Standard	Standard	Standard
Retractable tow bar with electric release button in load compartment (including 13-pin electrical kit, permanent power supply, Trailer Sway Control and Hill Start Assist) (not available with self-levelling suspension) (not available on ST-Line))	Option at extra cost		Option at extra cost
Removable (detachable) tow bar (not available on ST-Line)	Option at extra cost		Option at extra cost
Full ST-Line bodystyling kit – Unique front, rear bumpers and side skirts in body colour, unique fog light bezels, unique upper and lower grilles with honeycomb design in High Gloss Black			
		Standard	
Loadspace compartment			
Load compartment 4 tie down rings	Standard	Standard	Standard
Loadfloor – Metal sheet covered with carpet	Standard	Standard	Standard
Loadfloor storage compartment with latch and pull cup handle	Standard	Standard	Standard
Tonneau cover	Option at extra cost	Option at extra cost	Option at extra cost

¹⁾Safety feature, ²⁾Driver assistance feature. ***A rear-facing child seat should never be placed in the front passenger seat, when the Ford vehicle is equipped with an operational front passenger's airbag. The safest place for children is properly restrained on the rear seat.** *Ford Emergency Assistance is an innovative SYNC feature that uses a Bluetooth®-paired and connected mobile phone to help vehicle occupants initiate a direct call to the local Communications Centre, following a vehicle crash event involving an airbag deployment or fuel pump shut off. The feature operates in more than 40 European countries and regions.

Insurance groups

	Emissions Standard	Titanium	ST-Line	Vignale
2.0L 150 PS Ford EcoBlue diesel (with Auto Start-Stop), 6-speed manual, 4x2	Euro 6d	20E		
2.0L 150 PS Ford EcoBlue diesel (with Auto Start-Stop), 8-speed automatic, 4x2	Euro 6d	20E		
2.0L 190 PS Ford EcoBlue diesel (with Auto Start-Stop), 8-speed automatic, 4x2	Euro 6d		23E	25E
2.0L 190 PS Ford EcoBlue diesel (with Auto Start-Stop), 8-speed automatic, 4x4	Euro 6d		24E	25E
2.5L 190PS Duratec FHEV Petrol (with Auto Start-Stop), CVT Automatic, 4x2	Euro 6d	21E	22E	24E

E = Exceeds security requirement. Insurance ratings are issued by the Association of British Insurers and are shown above on both the (outgoing) 1-20 and (new) 1-50 rating scales.

FORD Warranty and Servicing Plans

	All S-Max Models
3-year/60,000 miles* Base Warranty (first year unlimited mileage)	<div></div>
1-year/unlimited miles* Ford Assistance Roadside Cover (Europe)	<div></div>
Ford Protect Premium Plans, including scheduled servicing and extended Ford Assistance	<div></div>
3-year/60,000 miles* Paint Warranty (first year unlimited mileage)	<div></div>
12-year/unlimited miles* Perforation Warranty	<div></div>

Standard

Option at extra cost

Part of an option pack at extra cost

*From the date of registration. Subject to terms and conditions.

5

Purchase

Getting behind the wheel of your next new Ford is simple, with a variety of finance options.



Build your vehicle

Build and personalise your vehicle online. Simply head to the Ford website, select your model, then choose your engine, body colour and extras. You'll be able to view the recommended price, and send your configuration to a Ford Dealer if you wish.

www.ford.co.uk/cars



Find a Dealer and request a test drive

You can search for a Ford Dealer by location or Dealer name on the Ford website, and request a test drive online. Simply fill in your details and your chosen Dealer will contact you to arrange a convenient time.

www.ford.co.uk/dealer-locator



Finance

When it comes to financing your vehicle, our size and expertise means we're well placed to provide you with a wide range of finance products.

Ford Credit* provides a range of finance products for your vehicle whether you are a private or business user.

Ford Lease^ specialises in contract hire and leasing and provides an alternative range of finance plans which can be tailored to suit your business.

For more information about our finance products visit **www.ford.co.uk/finance/ford-credit**



Ford Insure

Designed specifically for Ford owners, Ford Insure† offers value, simplicity and a range of benefits that really matter to you.

- Repairs by experts at one of our authorised Ford Repair Centres
- Guaranteed repairs for as long as you own your Ford
- Genuine Ford Parts and manufacturer-spec glass
- Courtesy car whilst your Ford is being repaired at an authorised repairer
- Free 24 hour emergency help lines
- Named Drivers earn a Ford Insure No Claims Bonus which can be used on any Ford Insure car insurance policy
- Up to 90 days cover to drive in Europe

www.fordinsure.co.uk



FordPass app

Unlock your car's full potential with the FordPass app. FordPass seamlessly connects you with your vehicle, keeping you moving in intelligent, intuitive ways. From optimising the route of your journey, self-diagnosing and sending you vehicle health alerts, pre-heating your vehicle before you get in, to helping you find your way back to your parked car on a map. It even removes the worry of whether you locked your car, thanks to Remote Lock and Unlock.

www.ford.co.uk/owner/owner-services/fordpass

*Finance subject to status. Guarantees may be required. Freepost Ford Credit. Ford Credit is a trading style of FCE Bank plc. Which is authorised by the Prudential Regulation Authority and regulated by the Financial Conduct Authority and the Prudential Regulation Authority under firm reference number 204469.

^Ford Lease is provided by ALD Automotive Limited acting as Ford Lease BS16 7LB. ALD is registered in England No. 987418. ALD is authorised and regulated by the Financial Conduct Authority.

†Terms and conditions apply. Ford Insure contracts are arranged, administered and provided by EUI Limited. EUI Limited is a subsidiary of Admiral Group plc and is authorised and regulated by the Financial Conduct Authority (Firm reference number: 309378). Registered in England and Wales as EUI Limited Reg.No. 2686904 Registered Address: Ty Admiral, David Street, Cardiff CF10 2EH.



Ford Service

With Ford, the service doesn't end when you leave the showroom. Ford Service is designed to keep your Ford in great condition and help you make the most of your car throughout its life.

- Ford Online Service Booking
- Contactless servicing options, for your convenience and safety
- Comprehensive service and maintenance plans
- Use of genuine Ford parts for added peace of mind
- Ford-trained technicians using the latest diagnostic equipment and tools
- One call for everything Ford 0203 564 4444
- Ford Accident Management, service free to all drivers
- Up to 12 months' UK and European Roadside Assistance (at participating Dealers)

www.ford.co.uk/owner/owner-services/ford-service



Ford Protect

Extend your standard 3-year/60,000 miles warranty to 4 years/80,000 miles or 5 years/100,000 miles with Ford Protect. Key benefits include*:

- High flexibility in duration and mileage
- Cover against unexpected electrical and mechanical repair costs in the UK and Europe
- The price of covered parts and labour are guaranteed for the length of your plan

Ford Protect New Vehicle Warranties are transferable to the new owner should you decide to sell your vehicle.

www.ford.co.uk/owner/my-vehicle/warranties

*Ford Protect terms and conditions apply. Please call 03702 416 726.



Ford Protect Service Plans

With various payment options available, you can cover the cost of your recommended scheduled services for up to 4 years from the day your new Ford is delivered. This can work out cheaper than paying for individual services and gives you added benefits:

- Ford Assistance – your UK and European Roadside Assistance will be increased to the length of your plan
- Vehicle hire – in the event that we can't finish any warranty work within 24 hours, we'll lend you a courtesy car for up to 7 days**
- A full Ford Service History, which may enhance your car's resale value

www.ford.co.uk/owner/service-and-maintenance/service-repair/plans

**Subject to availability and status, excluding fuel and insurance costs.

FOR MORE INFORMATION ON THE FORD FAMILY, VISIT WWW.FORD.CO.UK

Illustrations, descriptions and specifications. This catalogue was correct at the time of going to print. However, Ford policy is one of continuous product development. The right is reserved to change specifications, colours and recommended prices of the models and items illustrated and described in this publication at any time. For the latest details always consult your Ford Dealer. **Optional equipment.** Throughout this publication, wherever a feature is described as being an 'Option' or 'Option Fitment/Pack' etc, you should assume that it will be at extra cost to the base vehicle, unless specifically stated to the contrary. All models and colour combinations are subject to availability. **Note.** Some images portrayed are of a pre-production model and/or are computer generated, therefore, the design/features on the final version of the vehicle may differ in various respects. In addition, some of the features shown on the vehicles may be optional. **Note.** This brochure contains both original Ford accessories as well as a range of products from our suppliers. Fitment of accessories may have an impact on your vehicle's fuel consumption. ♦ The identified accessories are carefully selected third party supplier branded accessories which do not come with a Ford warranty but are covered by the third party supplier's own warranty, the details of which can be obtained from your Ford Dealer. **Note.** The Bluetooth® word mark and logos are owned by the Bluetooth SIG, Inc. and any use of such marks by Ford Motor Company is under licence. The iPod word mark and logos are the property of Apple Inc. Other trademarks and trade names are those of their respective owners. **Note.** Some driver assistance features and safety features described in this brochure are designed to function using sensors, whose performance may be affected under certain weather or environmental conditions.

The Government fuel figures do not express or imply any guarantee of the fuel consumption of any particular vehicle. The vehicles themselves have not been tested and there are inevitably differences between individual vehicles of the same model. In addition, a vehicle may incorporate particular modifications. Furthermore, the driver's style and road and traffic conditions, as well as the extent to which the vehicle has been driven and the standard of maintenance, will affect its fuel consumption. **Insurance groups** are only as recommended by the Association of British Insurers. You should always consult your insurance adviser for confirmation.

Ford One Call

In the unlikely event that your Ford Dealer can't help you or if you need to speak to us directly, call 0203 564 4444

Ford Rental – local service nationwide

Car and Van rental from our latest model range. Contact your local Ford Dealer for more information

Ford Motability

Call our Ford Motability team on 0345 6040019

Finance

Ford Credit Customer Services 0345 712 5490.
Ford Lease Customer Services 0344 600 1405
Calls to 0344 and 0345 numbers are charged at the same rate as a standard 01 or 02 geographic number, even when calling from a mobile.

Published by Ford Motor Company Limited, Laidon, Essex, England.
Registered in England No. 235446.
FA 1504/22
BJN 208174. FoE H32E
0821/GBR en
May 2021.
© Ford Motor Company Limited.



WWW.FORD.CO.UK





Pentagon Ford

Cheshire, Merseyside, North East Lincolnshire & West Midlands

Pentagon Ford Warrington

Winwick Road, Warrington, Cheshire, WA2 7NY

Tel: 01925 651111

Pentagon Ford Runcorn

Edwards Road, Runcorn, Cheshire, WA7 2XP

Tel: 01928 737500

Pentagon Ford St. Helens

Sherdley Road, St. Helens, Merseyside, WA9 5AD

Tel: 01744 610600

Ford Transit Centre Grimsby

South Humberside Industrial Estate, Estate Road No 2, Grimsby, North East Lincolnshire, DN31 2TG

Tel: 01472 493404

Ford Transit Centre Halesowen

Park Road, Halesowen, West Midlands, B63 2RL

Tel: 01384 881455